

Palmerston Cottage
Upper Woodstock, Cape Town
Tel +27(0)21 6830307 Fax +27(0)21 6830255

e-mail: chhouse@mweb.co.za
www.capetown-guesthouse.co.za

PALMERSTON COTTAGE

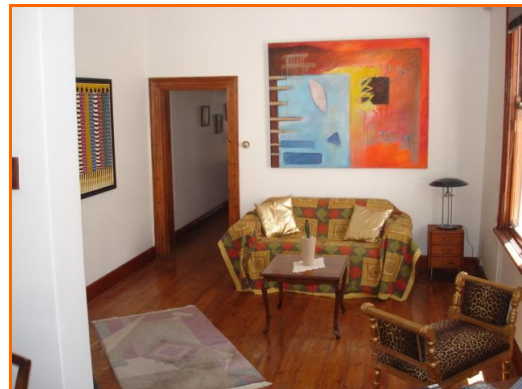
Self-catering in Upper Woodstock, Cape Town CBD

Palmerston Cottage is your choice of a very centrally situated self-catering house in Cape Town. The cottage has been recently renovated, the Victorian Charm restored and combined with modern amenities in the kitchen and bathroom area. Both of the bedrooms have a queen size bed. A stylish lounge with a cozy chimney fire is open plan to the modern kitchen and dining area. Mixing taps and chrome fittings are completing the modern style bathroom. A lovely terrace in front of the house offers a nice view over the roofs of Woodstock and Cape Town towards the harbor. There is a small courtyard showing to Devil's Peak.

Trendy Woodstock is bordering the CBD of Cape Town. Therefore this place is the ideal position to exploring the city centre, the V&A Waterfront, Table Mountain and the beaches and places along the Atlantic Seaside. The busy night life in Waterkant and in Upper Long and Kloof Street is just a few minutes' drive away.

Facilities of the cottage:

- ▶ fridge / stove
- ▶ Nespresso + filter coffee machine
- ▶ LSD TV
- ▶ DVD / CD + radio
- ▶ alarm system
- ▶ safe
- ▶ linen + bath towels
- ▶ 2 x queen size bed
- ▶ chimney



Distances from Palmerston Cottage:

- 0.2 km Restaurants in Roodebloem Street, Upper Woodstock
- 2-3 km Cape Town CBD
- 4 km V&A Waterfront
- 8 km Table Mountain lower cable station
- 5-15 km Sea Point, Clifton, Camps Bay
- 20 km Cape Town airport
- 60 km Cape Point / Cape of Good Hope
Stellenbosch / Somerset West



Palmerston Cottage
Upper Woodstock, Cape Town
Tel +27(0)21 6830307 Fax +27(0)21 6830255

e-mail: chchouse@mweb.co.za
www.capetown-guesthouse.co.za

Directions to Palmerston Cottage:

Take highway N2 / when close to Table Mountain keep the right lane direction to Cape Town / after the hospital bend take exit Roodebloem Road and turn right into Roodebloem Road / drive under the highway through and stay in Roodebloem Road by turning left and downwards the mountain / after 50 meters turn right into Palmerston Road (corner of Don Pedro Restaurant) / Palmerston is on the right hand side no. 29.

